

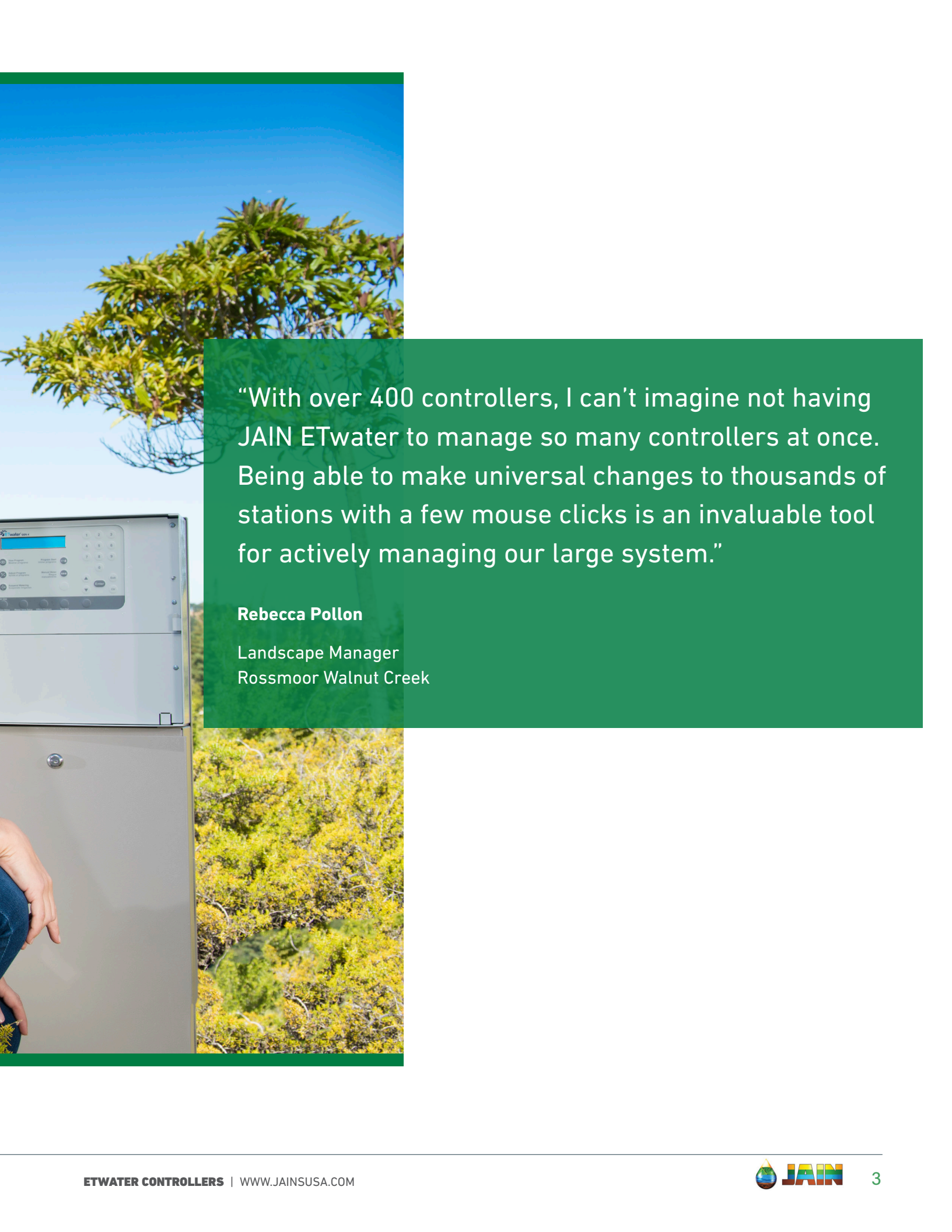
ETWATER CONTROLLERS



World Leader in Irrigation Technology





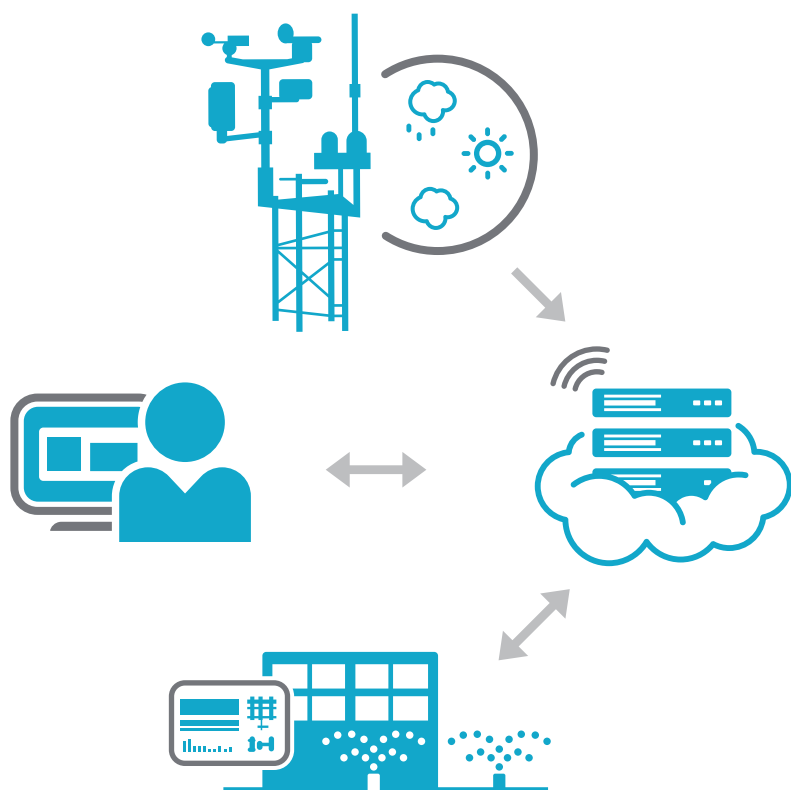


“With over 400 controllers, I can’t imagine not having JAIN ETwater to manage so many controllers at once. Being able to make universal changes to thousands of stations with a few mouse clicks is an invaluable tool for actively managing our large system.”

Rebecca Pollon

Landscape Manager
Rossmoor Walnut Creek

How ETwater Controllers Work

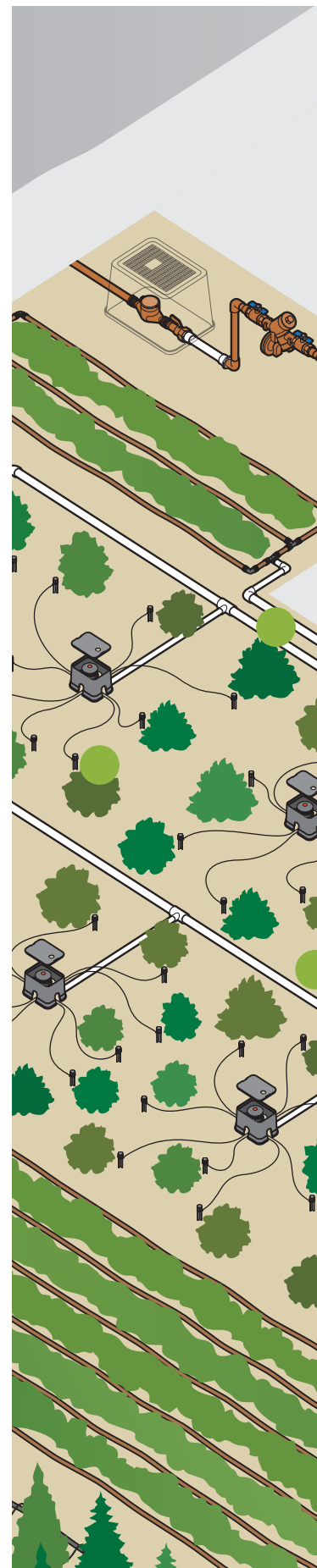


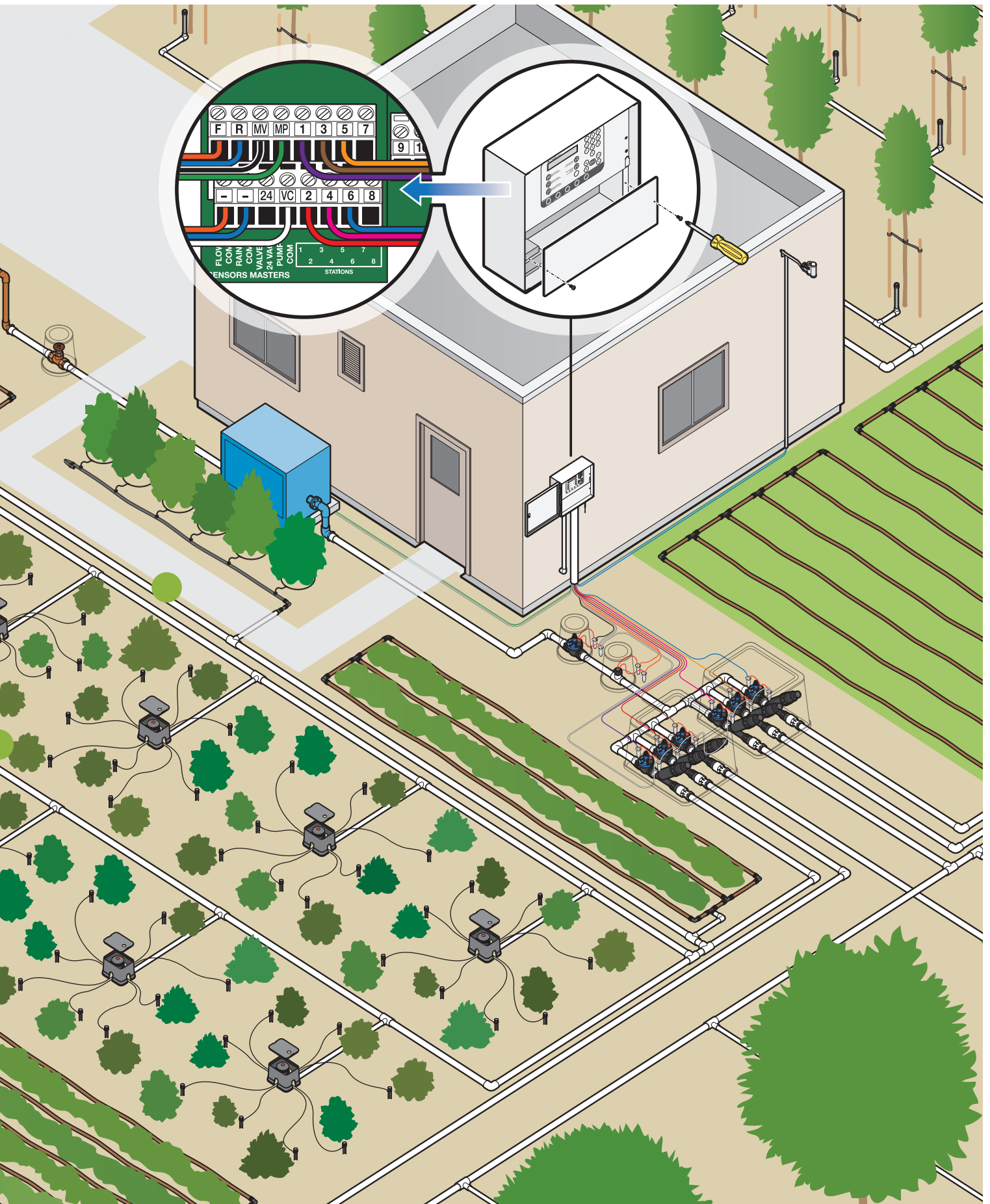
Use the JAIN Unity online management system to set up your account by entering your landscape profiles. Then, install the ETwater smart controller.

Microclimate forecasts localized to latitude / longitude coordinates and cross-referenced to an exclusive historical, real-time hourly and forecast weather database.

JAIN Unity servers access the weather data, compute evapotranspiration, and generate daily watering schedules for each landscape profile. Servers then connect wirelessly to ETwater smart controllers to exchange schedules and data.

ETwater smart controllers execute daily irrigation schedules.





HermitCrab Pro

Product Features

- Self-adjusting weather-based watering schedules
- Weatherproof, vandal resistant plastic NEMA 4X box and stainless steel hardware for mounting adjacent to existing controller
- Backlit display for viewing HermitCrab Pro operating status and programming selections
- Two-way wireless communication for downloading ET based schedules, reporting irrigation site data and sending alerts
- Standard connection for rain sensors
- 3-year Limited Warranty
- Non-volatile Memory
- Instant control and station watering from any device via Unity Mobile
- 4G LTE/5G network provides faster connections
- HermitCrab Pro with Flow Monitoring measures/ records flow and alerts on flow events such as main line breaks, lateral line breaks, stuck valves, and broken sprinkler
- Diagnostic LED's report on power and flow sensor status



Electrical Specifications

- EPA Watersense Certified
- Dimensions 7.9" L x 3.9" W x 2" D
- Weight 2 lbs.
- Input voltage 24 VAC provided by host controller
- 3/4" conduit hole in center of controller bottom
- Flow sensor sold separately

Compatible Host Controllers

Hunter	Rainbird	Toro	Irritrol	Buckner / Superior	Rain Master	Weathermatic
ACC	ESP-LXME	TIS-PRO	MC PLUS B	Sterling	Eagle	Smartline
ICC	ESP-LXMF	TMC-212	MC-E		DX2	Proline
Pro-C	ESP Modular	TMC-424E	Rain Dial - R		Hawk	
X-Core	ESP LX Plus		Total Control - R		Sentar and Sentar II	
	SST Models 400, 600 and 900					
	STPi Series					

HermitCrab Pro Cable Model Numbers

ETW-HCP-FA	HermitCrab Pro with Flow Adapter (without HermitCrab Host Controller)
ETW-HCP-CLR	HermitCrab Pro (no flow adapter)
ETW-HC-FA	HermitCrab Pro Flow Adapter
ETW-HC-H-CO	Hunter Host Controller Cable
ETW-HC-T-CO	Toro Host Controller Cable
ETW-HC-IR6-CO	Superior Host Controller Cable
ETW-HC-W-CO	Weathermatic Host Controller Cable
ETW-HC-RB5-CO	Rain Bird Host Controller Cable

SmartBox

Product Features

- Durable, weather resistant aluminum enclosure with locking cabinet for indoor or outdoor use
- Suitable for wall mounting and selected pedestal installations
- Manual operation of individual stations or all stations *(from 1-255 minutes in 1 minute increments)*
- Backlit display for viewing programs and manual valve operation
- Plug in interface for RainMaster remotes
- Connections for rain sensor, booster pump, master valve and flow sensor. Compatible with normally open or normally closed master valves and rain/freeze or wind sensors.
- Email alerts sent in the event of a station short or flow alarm

SmartBox Includes

- SmartBox controller is available in 8 station increments up to 48 stations
- Chassis mounted grounding lug for added lightning protection
- 120VAC input and 24VAC output
- All 24VAC output terminals have surge protection rated up to 4KV in accordance with IEC 6100-4-5 standard
- All outputs protected by a 2.0 amp self-resetting fuse
- Input power draw: 1.0 amp or less at 120 volts VAC
- Total controller output is 2.0 amps
- Non-volatile memory
- 3-year controller limited warranty
- FCC approved



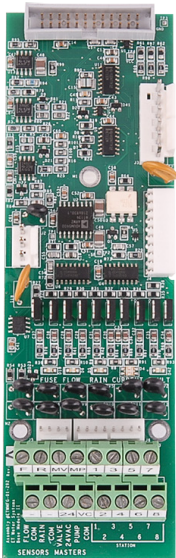
Electrical Specifications

SmartBox Model 205

- Station Capacity 8, 16, 24, 32, 40 or 48
- Dimensions 14.5" W x 12.5" H x 4.75" D
- Weight 10 lbs
- Wireless Communication

Optional Accessories

- Covert antenna
- Universal Remote Adapter



8 Station Wiring Board

SmartBox Model Numbers

205W-8	8 Station Model 205 Controller
205W-16	16 Station Model 205 Controller
205W-24	24 Station Model 205 Controller
205W-32	32 Station Model 205 Controller
205W-40	40 Station Model 205 Controller
205W-48	48 Station Model 205 Controller

SmartWorks Replacement Panels

Product Features

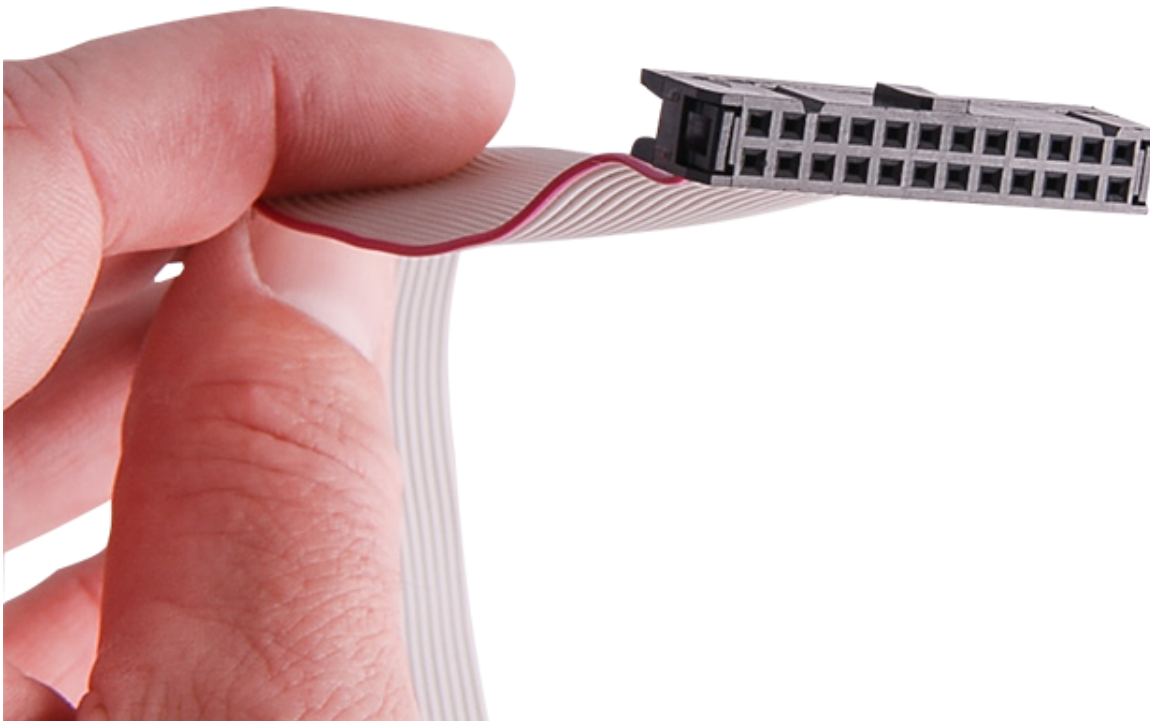
- Self-adjusting weather-based watering schedules
- Backlit display for viewing operating status and programming selections
- Two-way wireless communication for downloading ET-based schedules, reporting site data and sending alerts
- Standard connection for rain sensors
- 3-year Limited Warranty
- Instant control and station watering from any device via Unity Mobile
- 3G/4G LTE network provides faster connections
- Compatible with most available irrigation flow sensors



SmartWorks panel replaces the electronic panel assemblies in:

- Irritrol® MC Plus series
- Rain Master® Sentar, Hawk, Eagle or EvolutionDX2 series
- Rain Bird® models that fit in the deep-draw cabinet, including: ESP-MC (Maxicom2® compatible) series, ESP-SAT series, ISC, ISC+, ISC-B, ISC-SAT, ISC-B-SAT, CCU & CCU-J

SmartWorks panels are compatible with both wall and pedestal mount configurations.





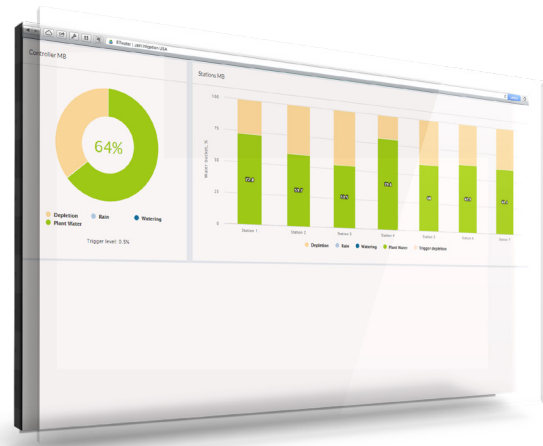
JAIN Unity

The cloud-based JAIN Unity platform takes all the environmental data about a landscape (plant types, soil, slope, sun/shade), and adjusting for the weather provides intelligent, automated water scheduling for the ETwater line of smart irrigation controllers. In addition, with Unity you have real-time management and monitoring capability from any mobile or smart device.

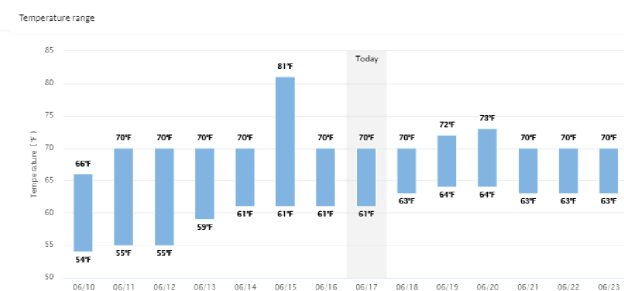
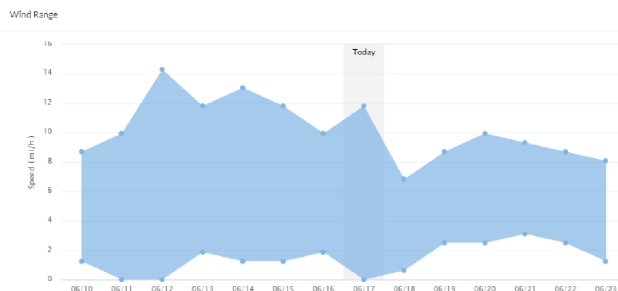
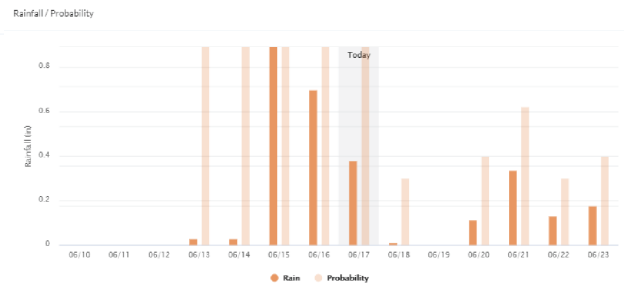
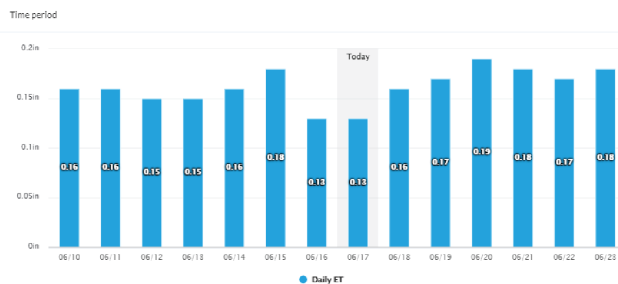
Remote Management and Monitoring

JAIN takes a straightforward approach to smart irrigation. We focus on getting landscapers back to landscaping, giving water conservation professionals the tools they need to measure usage and delivering a great return on investment for property owners.

- Easy online setup out of the box. No guesswork or manual programming of irrigation run-times. No downloads.
- Designed for field crew to operate with no special training or knowledge.
- Don't worry about installing software or updates. We do that part.
- Ensures consistent, scientific irrigation scheduling across a portfolio of sites/locations.



Visual display of water level in the plant root zone for each irrigation station.



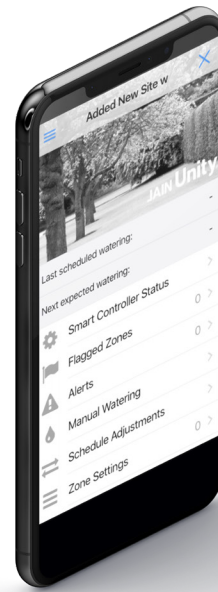
Graphs showing temperature, rain, wind, cloud coverage, and more for your location.

JAIN Unity

Features and Benefits

One dashboard to see all your sites, stations, and events. Make quick changes to hundreds of stations simultaneously.

- Real-time visual tracking of plant moisture balance levels on each irrigation station.
- Extensive historical and forecast weather data. Graphs showing temperature, rain, wind, cloud coverage, and more for your location.
- Automatically suspends irrigation before it rains. Uses forecast and long-range weather predictions to reduce operation of the irrigation system for getting the most utility from rainwater.
- Preemptively prepares soil moisture before extreme heat events to avoid higher water usage ahead of time in order to maintain plant health.
- Advanced customization available including user-defined time restrictions, fixed watering schedules, water windows, establishment schedules and depletion levels.
- Optional flow monitoring that automatically detects leaks and closes master valves to prevent flooding.
- Email alerts for malfunctioning valves to groundskeepers.
- Enhanced on-demand reports, including run-time, estimated, measured irrigation usage reports, and more.



Unity Mobile

- Automatic solenoid test
- See real-time controller status
- Flag button to earmark one or more zones for later follow-up
- Add a zone repair note
- Run multi-station wet checks
- Instant suspend irrigation
- Unity Mobile available in Spanish





Jain is a fully integrated global food / plant production company recognized by Harvard Business to be one of five global sustainability champions, the G-20 for lifting people out of poverty, and Fortune magazine for being a "Change the World Company." Our irrigation manufacturing capabilities include everything from behind the pump to the flush valve at the end of the lateral and everything in between. We lead the industry in manufacturing technology, owning both our extrusion and mold manufacturing equipment providers.

Jain leads plant science research globally across a variety of food crops and is staffed with some of the world's leading research scientists. With the Gandhi Library, Jain now houses the leading collection of the world's best plant science knowledge in a single facility. Our agronomic knowledge is integrated from our world class plant tissue culture operations through our food processing businesses. We research, educate, advance, manufacture, finance, propagate plants, and purchase produce for processing all in an effort to fulfill the Jain mission:

"Leave This World Better Than You Found It"

Jain Irrigation, Inc.

www.jainsusa.com/etwater

Jain Customer Service

Phone: (559) 485-7171

Fax: (800) 777-6162

Western Manufacturing Facility

2851 E. Florence Ave.

Fresno, CA 93721

Northeastern Manufacturing Facility

740 Water St.

Watertown, NY 13601

ETwater Corporate Offices

6 Hamilton Landing Suite 175

Novato, CA 94949

**EPA WaterSense
Certified**



2020 
**NEW PRODUCT
CONTEST** **People's Choice**
Irrigation Association



Please recycle after use.

AG-011 6/21 © 2021 Jain Irrigation, Inc. All rights reserved.

